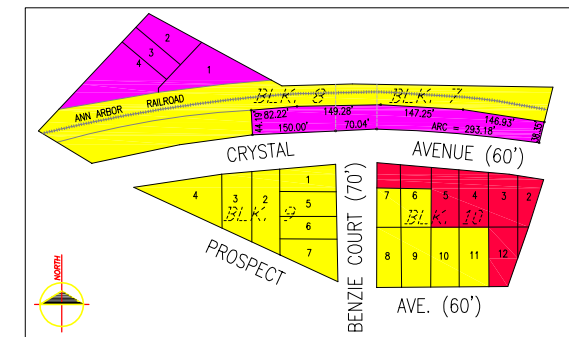
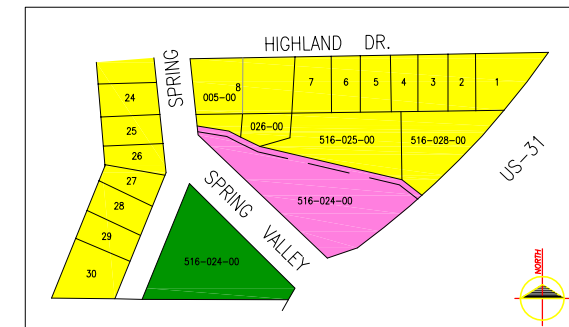


ZONING DISTRICTS

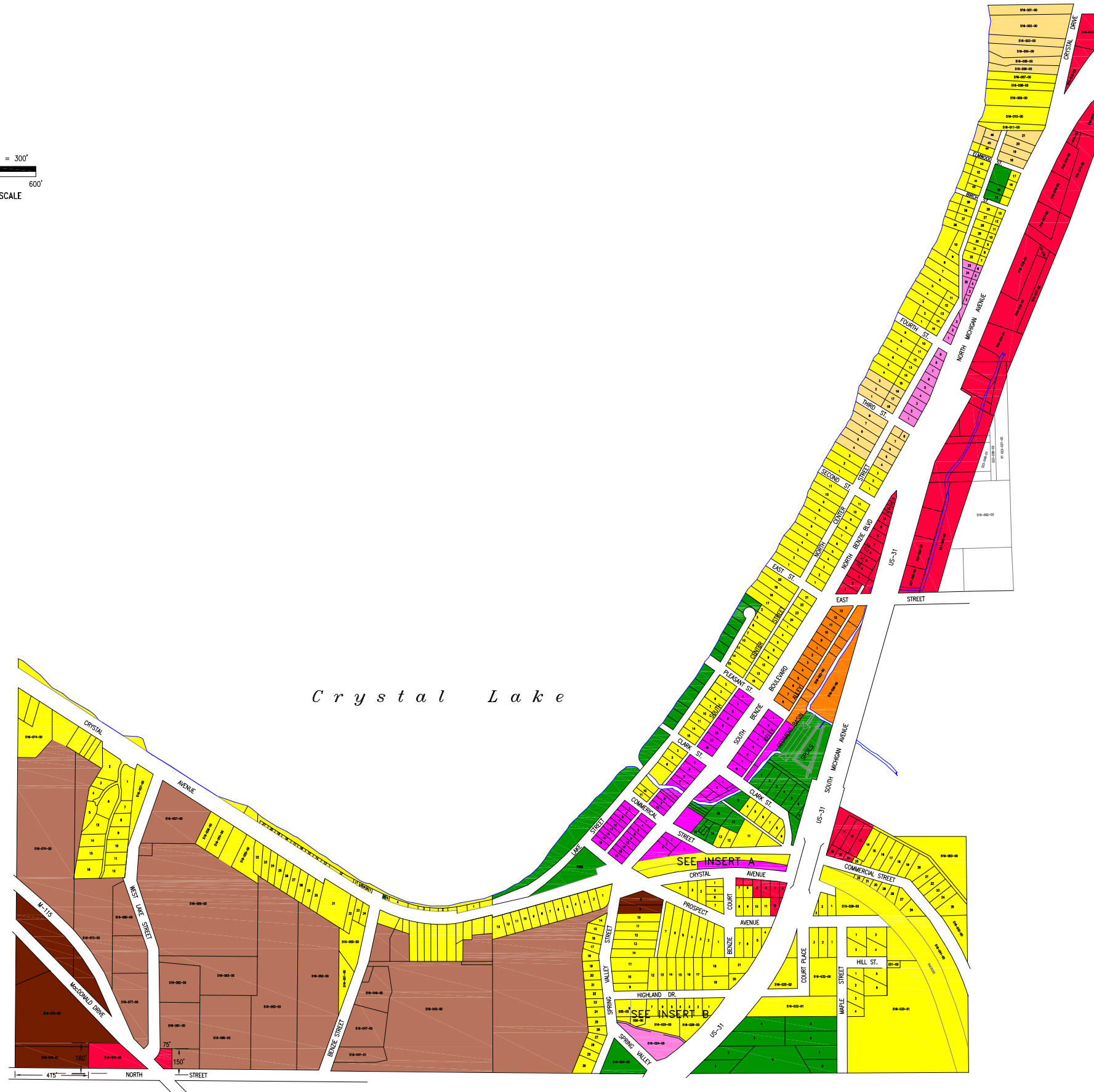
- R-1 ONE FAMILY RESIDENTIAL
- R-2 ONE and TWO FAMILY RESIDENTIAL
- RC RESIDENTIAL CONSERVATION
- MF MULTI-FAMILY RESIDENTIAL
- OC OFFICE COMMERCIAL
- TC TRANSITIONAL COMMERCIAL
- GC GENERAL COMMERCIAL
- DC DOWNTOWN COMMERCIAL
- PL PUBLIC LAND



INSERT A
APPROXIMATE SCALE: 1" = 150'



INSERT B
APPROXIMATE SCALE: 1" = 150'



NOTES:
THE CHANGES ARE MORE OR LESS BASED ON THE LEGAL DESCRIPTIONS CONTAINED IN THE ZONING ORDINANCE. SEVERAL OF THE CHANGES OR AMENDMENTS ARE NOT INCLUDED IN THE ORDINANCE, HAVE NO LEGAL DESCRIPTION OR ARE ERRONEOUSLY DESCRIBED. THEREFORE, THEY MAY NOT BE CORRECTLY ILLUSTRATED ON THIS MAP. ANY AND ALL "IDENTIFIED" ZONING CHANGES SHALL BE VERIFIED BY THE ORDINANCE AND/OR COUNCIL MINUTES PRIOR TO ACCEPTANCE AND/OR A PUBLIC HEARING WILL BE HELD ON THE UPDATED ZONING MAP.

SOURCE MATERIAL REFERENCED FOR CREATION OF THIS MAP INCLUDES THE BENZE COUNTY TAX MAPS (1996); USGS 7.5' TOPOGRAPHIC MAPS (BENZONIA AND BEULAH QUADRANGLES, 1983 PROVISIONAL EDITION); AND BLACK AND WHITE AERIAL PHOTOGRAPHY (1991).

THIS MAP DEPICTS PARCELS UNDER SEPARATE TAX DESCRIPTIONS OR LOT PATTERNS IN PLATTED SUBDIVISIONS AS OF (JANUARY 1, 1997). NOTE THAT PLATTED ROADS SHOWN HERE ARE NOT NECESSARILY OPEN TO TRAFFIC.

LAND USE PERMITS ARE REQUIRED FOR MOST LAND DEVELOPMENT PROJECTS. PRIOR TO INITIATION OF ANY CONSTRUCTION ACTIVITY, PLEASE CONTACT THE ZONING ADMINISTRATOR FOR THE VILLAGE OF BEULAH.

ORIGINAL VERSION OF THIS MAP WAS CREATED BY SUNDBERG, CARLSON AND ASSOCIATES 07/07/1997 AND REVISED FOR THE CLIENT ON 07/17/2000.

Sundberg, Carlson & Associates, Inc.
 Engineers
 Surveyors
 Environmental Services

12080 Belden Ave., Suite 200
 231-946-1311 800-946-1982
 Fax: 231-941-6823

By:	JF	JF	JF	JF
Revision:	Changes per Village	09/27/02		
	Changes per Village	09/30/02		
	Changes per Village	12/12/02		
	Changes per Village	05/15/03		

Date:	08/28/2001	Scale:	AS NOTED
Drawn By:	JF	Checked By:	FLH

Location:
 VILLAGE OF BEULAH
 BENZE COUNTY
 MICHIGAN

Sheet Title:
ZONING DISTRICTS MAP
VILLAGE OF BEULAH

Client:

03/30/2003 10:45:11 AM C:\Users\jcarlson\My Documents\Map\Map\Crystal Lake\Crystal Lake.mxd Printed on 07/17/2000 10:45:11 AM